

Ror2 Antibody (C-term)
Purified Rabbit Polyclonal Antibody (Pab)
Catalog # AP20846c**Specification**

Ror2 Antibody (C-term) - Product Information

Application	WB, IHC-P,E
Primary Accession	Q01974 , Q9Z138
Other Accession	Q01974
Reactivity	Human, Mouse
Host	Rabbit
Clonality	Polyclonal
Isotype	Rabbit IgG

Ror2 Antibody (C-term) - Additional Information**Other Names**

Tyrosine-protein kinase transmembrane receptor ROR2, mROR2, Neurotrophic tyrosine kinase, receptor-related 2, Ror2

Target/Specificity

This Ror2 antibody is generated from a rabbit immunized with a KLH conjugated synthetic peptide between 756-790 amino acids from the C-terminal region of human Ror2.

Dilution

WB~~1:1000

IHC-P~~1:25

E~~Use at an assay dependent concentration.

Format

Purified polyclonal antibody supplied in PBS with 0.09% (W/V) sodium azide. This antibody is purified through a protein A column, followed by peptide affinity purification.

Storage

Maintain refrigerated at 2-8°C for up to 2 weeks. For long term storage store at -20°C in small aliquots to prevent freeze-thaw cycles.

Precautions

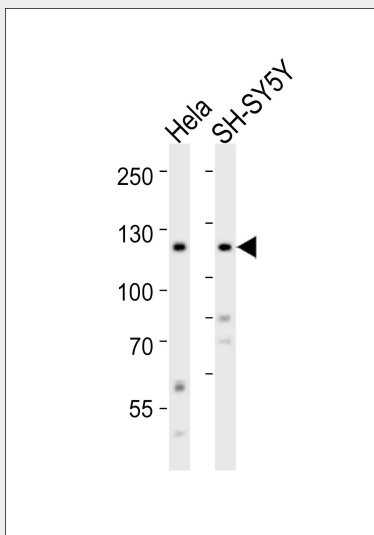
Ror2 Antibody (C-term) is for research use only and not for use in diagnostic or therapeutic procedures.

Ror2 Antibody (C-term) - Protein Information**Ror2 Antibody (C-term) - Protocols**

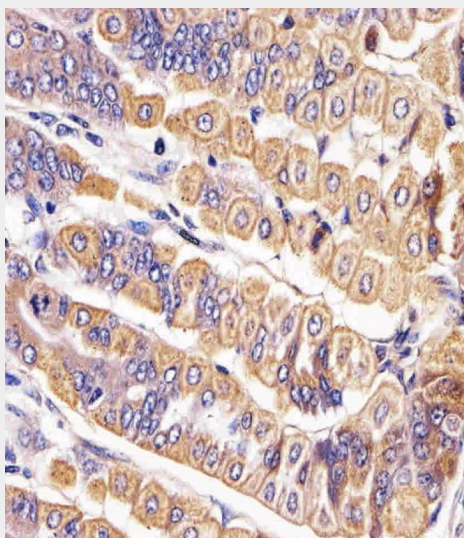
Provided below are standard protocols that you may find useful for product applications.

- [Western Blot](#)
- [Blocking Peptides](#)
- [Dot Blot](#)
- [Immunohistochemistry](#)
- [Immunofluorescence](#)
- [Immunoprecipitation](#)
- [Flow Cytometry](#)
- [Cell Culture](#)

Ror2 Antibody (C-term) - Images



Western blot analysis of lysates from HeLa, SH-SY5Y cell line (from left to right), using Ror2 Antibody (C-term) (Cat. #AP20846c). AP20846c was diluted at 1:1000 at each lane. A goat anti-rabbit IgG H&L (HRP) at 1:10000 dilution was used as the secondary antibody. Lysates at 20ug per lane.



Immunohistochemical analysis of paraffin-embedded mouse stomach section using Ror2 Antibody (C-term) (Cat#AP20846c). AP20846c was diluted at 1:25 dilution. An undiluted biotinylated goat polyvalent antibody was used as the secondary, followed by DAB staining.

Ror2 Antibody (C-term) - Background

Tyrosine-protein kinase receptor which may be involved in the early formation of the chondrocytes. It seems to be required for cartilage and growth plate development. Phosphorylates YWHAB, leading to induction of osteogenesis and bone formation (By similarity).

Ror2 Antibody (C-term) - References

Oishi I., et al. *Genes Cells* 4:41-56(1999).
Church D.M., et al. *PLoS Biol.* 7:E1000112-E1000112(2009).
DeChiara T.M., et al. *Nat. Genet.* 24:271-274(2000).
van Wijk N.V., et al. *Biochem. Biophys. Res. Commun.* 390:211-216(2009).